



BRAKE PAD GUIDE



Includes:

- ⊗ Brake Pad Applications & Cross References
- ⊗ Rotor Applications & Cross References
- ⊗ Matched Pad & Rotor Applications
- ⊗ Brake Pad Outlines for Easy Identification





TRUSTED. RELIABLE. PROVEN.

TRP® is your truck and trailer parts partner who knows parts like you know the road. A growing customer base Australia-wide are choosing TRP® Parts for their reliable range of quality, warranty-backed parts for all makes of trucks and trailers.

TRP® offers a quality, affordable alternative to OEM parts. TRP® Parts are available from 56 Kenworth, DAF, PACCAR Parts and TRP dealerships, Australia-wide, supported by PACCAR Parts Distribution Centres in both Melbourne and Brisbane.



AFFORDABLE ALTERNATIVE TO OE PARTS

Leveraging from the core competencies of its parent business, TRP is able to offer an affordable alternative to OE parts without sacrificing quality or PACCAR's rigorous testing. The products are targeted to an all makes market, where quality and affordability are top of mind to owner/operators or fleet managers.

The business is proud of its commitment to maintaining unrivalled customer satisfaction, a distinction earned by ensuring consistent availability and strict quality control.

TRP® BRAKE ROTOR & PAD RANGE

TRP offers a great range of matched Disc Brake Rotors and Pads to suit popular truck and trailer applications, all backed by our 12 month hassle free warranty. At TRP, we know how important quality and performance is in all brake products. That's why we independently test to globally recognised standards and only manufacture to OE specifications.

Not to mention that our rotors and pads offer a fantastic value for money alternative. Simply put, when it comes to brakes, TRP has you covered.

BRAKE PAD IDENTIFICATION GUIDE

To help you identify which TRP brake pad is the right one for your application, we have come up with an easy to use Pad Identification Guide. Simply place your brake pad over the outline to determine which TRP brake pad part number suits your application.

Also included in this guide is a cross reference table for both TRP Rotors and Pads. At TRP, we are continuously building and growing the brake range of products so keep an eye out for upcoming product releases.

This TRP Brake Pad Guide along with other TRP Product Guides may be found on the TRP Website and are available to download.

trpparts.com.au/product-guides



TRP® BRAKE PADS

DESIGNED TO MATCH ORIGINAL EQUIPMENT QUALITY STANDARDS

- ▶ Manufactured in state of the art facilities to meet the most stringent automotive quality standards
- ▶ Tested and benchmarked against OEM friction materials
- ▶ Bedding in performance coating

BEST POSSIBLE BRAKE PERFORMANCE UNDER ALL CONDITIONS

- ▶ Patented "Steel Peel" retention system for optimal adhesion of friction material on back plate
- ▶ Equal heat distribution for constant performance and even wear pattern
- ▶ Braking performance comparable to original equipment brake pads

QUALITY ASSURED

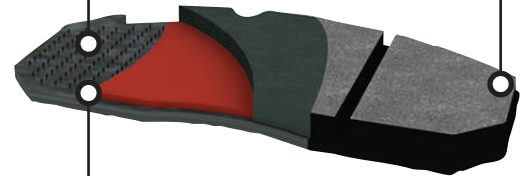
- ▶ ECE R90 approved tests conducted by independent test authorities
- ▶ ECE R90 is a recognised standard in Australia and NZ and tests the pads performance to ensure it is within 15% of the OEM product
- ▶ TRP Brake Pads clearly marked with ECE R90 code number, WVA number and batch code for full traceability

FEATURES & BENEFITS

- ▶ ECE R90 certified, a recognised standard in Australia and NZ
- ▶ Heavy duty and super heavy duty friction material options to suit multiple applications
- ▶ Matched TRP rotors available on some applications.
- ▶ Independently tested against the leading disc pads on the market ensures TRP can compete against the best.
- ▶ 12 month unlimited kilometre, hassle-free warranty

FULL FACE BEDDING-IN COATING
PERFORMANCE FROM FIRST FIT

"STEEL PEEL"
RETENTION SYSTEM



OEM THICKNESS BACK PLATES
MAXIMUM RESISTANCE TO BEND & FLEX ENSURES REDUCTION IN HOT SPOTTING & PRESENTS FULL PAD FACE TO THE ROTOR



TRUSTED. RELIABLE. PROVEN.

BRAKE PAD REFERENCE

PAGE

SUITS	TRP PART NO.	MATERIAL	CROSS REFERENCE	
BPW TSB4309	1962436	Heavy Duty	0980107960 / MDP3228K / WDP107K	6
DANA ESD-225	AD1527SD	Super Heavy Duty	92008	8
KNORR SB6/SN6	1961734	Heavy Duty	0980108150 / MDP3165K / WDP092K	10
KNORR SB6/SN6	0908142	Heavy Duty	DCVP036K / MDP3095K / WDP036K	12
KNORR SB7000	0908134	Heavy Duty	MDP3087K	14
KNORR SB7000	1540192	Super Heavy Duty	1982826	14
KNORR SK7	1961736	Heavy Duty	0980108160 / DCVP094 / MDP3171K / WDP094K	16
KNORR SK7	1962431	Heavy Duty	3057008500	18
KNORR SK7	1536934	Super Heavy Duty	K070796 / K129276	18
MERITOR DX195	0908137	Heavy Duty	MDP3124K / MDPDX195 / WDP024K	20
MERITOR DX 225	1536932	Super Heavy Duty	KIT225019	22
MERITOR ELSA225-3	1962267	Super Heavy Duty	CVP101K / MDP3174K	24
MERITOR EX225 H2	1536935	Super Heavy Duty	MDPEX225	26
WABCO PAN19-1	0908138	Heavy Duty	3057008000 / DCVP090K / MDP3126K / WDP090K	28
WABCO PAN22-1	1962432	Heavy Duty	12999796 / DCVP096K / MDP3162K / WDP096K	30



BRAKE PAD GUIDE

CALIPER		BRAKE ROTOR REFERENCE						PAGE	
CALIPER	SUITABILITY	TRP PART NO.	OEM PART NO.	CROSS REFERENCE	DIA (mm)	STUD NO.	PCD (mm)		
BPW TSB4309	BPW	TRPDR001	0308835060	MBR5803 / WDR703	430	10	285	6	
DANA ESD-225 & HALDEX DB	DANA	N/A	59173B		430	10	285	8	
KNORR SB6000	BPW SB3745	TRPDR004	0308834070	MBR5113 / WDR587	377	10	285	10	
KNORR SB6000	Iveco Eurocargo Tector	N/A	2992291	WDR711	375	8	275	12	
			225894	WDR720	377	14	144		
			2992636	CDR1060	377	8	275		
KNORR SB7000	SAF, Scania	N/A	4079000300	MBR5074 / WDR575	430	10	335	14	
KNORR SB7/SN7 HD	DAF	N/A	1812563		432	NA	NA	14	
KNORR SK7000	BPW SB4309T	TRPDR001	0308835060	MBR5803 / WDR703	430	10	285	16	
KNORR SK7	SAF	N/A	4079001600	WRD735	377	10	193	18	
KNORR SK7	SAF	N/A	802569	802569N	430	10	230	18	
MERITOR DX195	Kenworth, Mack	TRPDR002	3218N1366	AP3221	378	10	285	20	
MERITOR DX225	Kenworth, Mack	TRPDR008	23123615002	AP3232	420	10	285	22	
MERITOR ELSA 225-3	Volvo	N/A	8551042	MBR5806 / WDR719	434	NA	NA	24	
MERITOR EX225	Kenworth, Mack	TRPDR006	23123642002	AP3225	434	10	266	26	
WABCO PAN 19	K-Hitch, SAF, York	TRPDR003	79787412	WDR702	377	8	196	28	
			TRPDR005	4079001600	WDR735	376	10		193
			TRPDR007	4079001201	MBR5804 / WDR704	377	10		285
WABCO PAN 22-1	SAF, York	N/A	4079001300	MBR5125 / WDR718	430	10	190	30	



BPW TSB 4309

HEAVY DUTY

TRP PAD NO.

1962436

WVA

29228

MATERIAL

TRP1210HD

CALIPER

BPW TSB 4309

HEIGHT

117.8mm

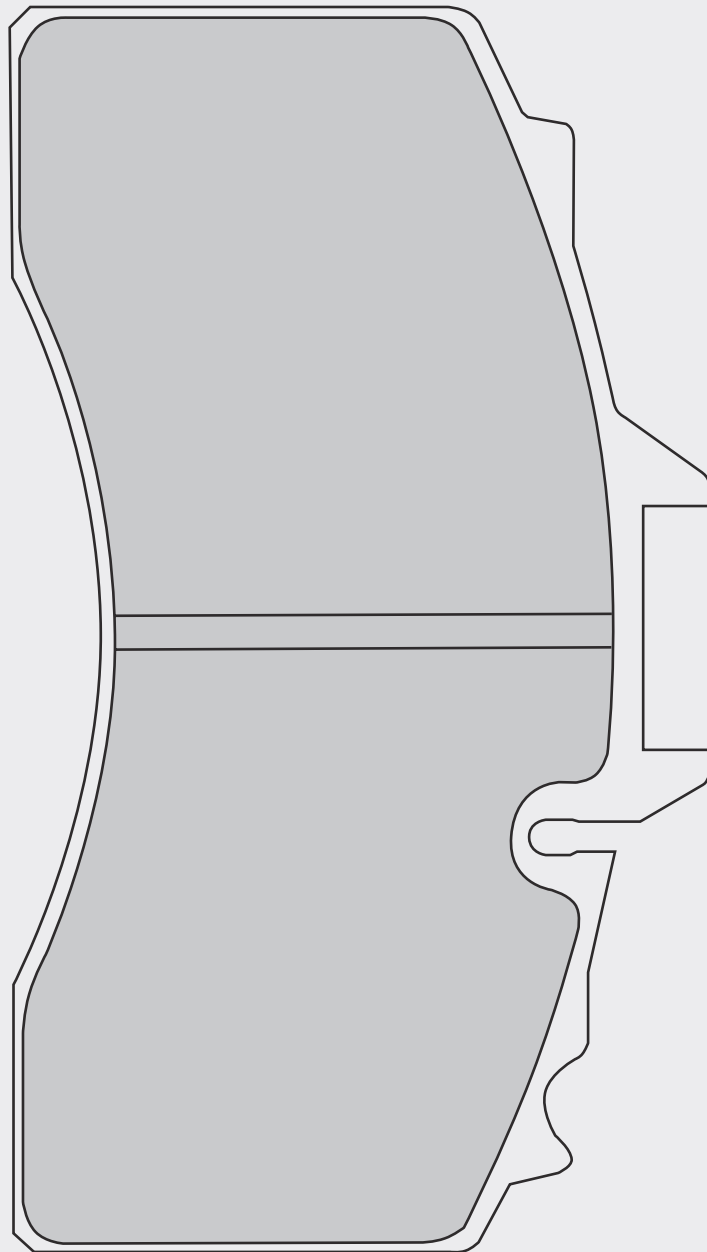
LENGTH

210.3mm

THICKNESS

29.6mm

PAD SHAPE





BPW TSB 4309

HEAVY DUTY

TRP PAD NO.

1962436

WVA

29228

MATERIAL

TRP1210HD

CALIPER

BPW TSB 4309

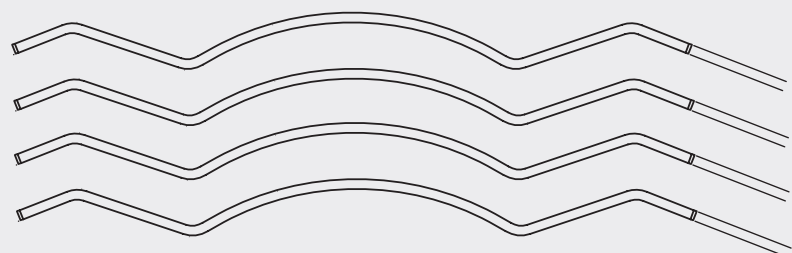
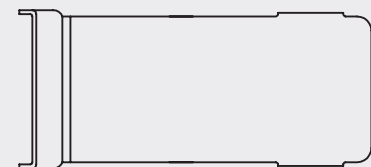
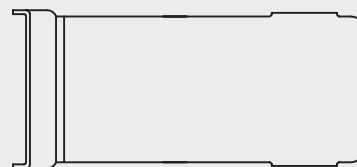
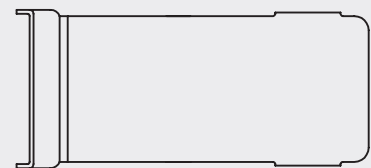
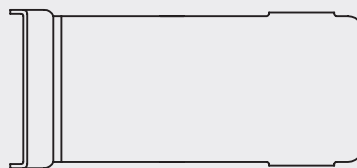
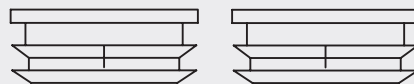
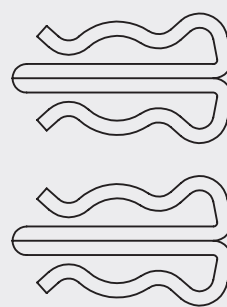
HEIGHT 117.8mm

LENGTH 210.3mm

THICKNESS 29.6mm

ACCESSORY KIT

*NOT TO SCALE





HALDEX DB22

SUPER HEAVY DUTY

TRP PAD NO.

AD1527SD

WVA

29185

MATERIAL

TRP1310SHD

CALIPER

HALDEX DB22

HEIGHT

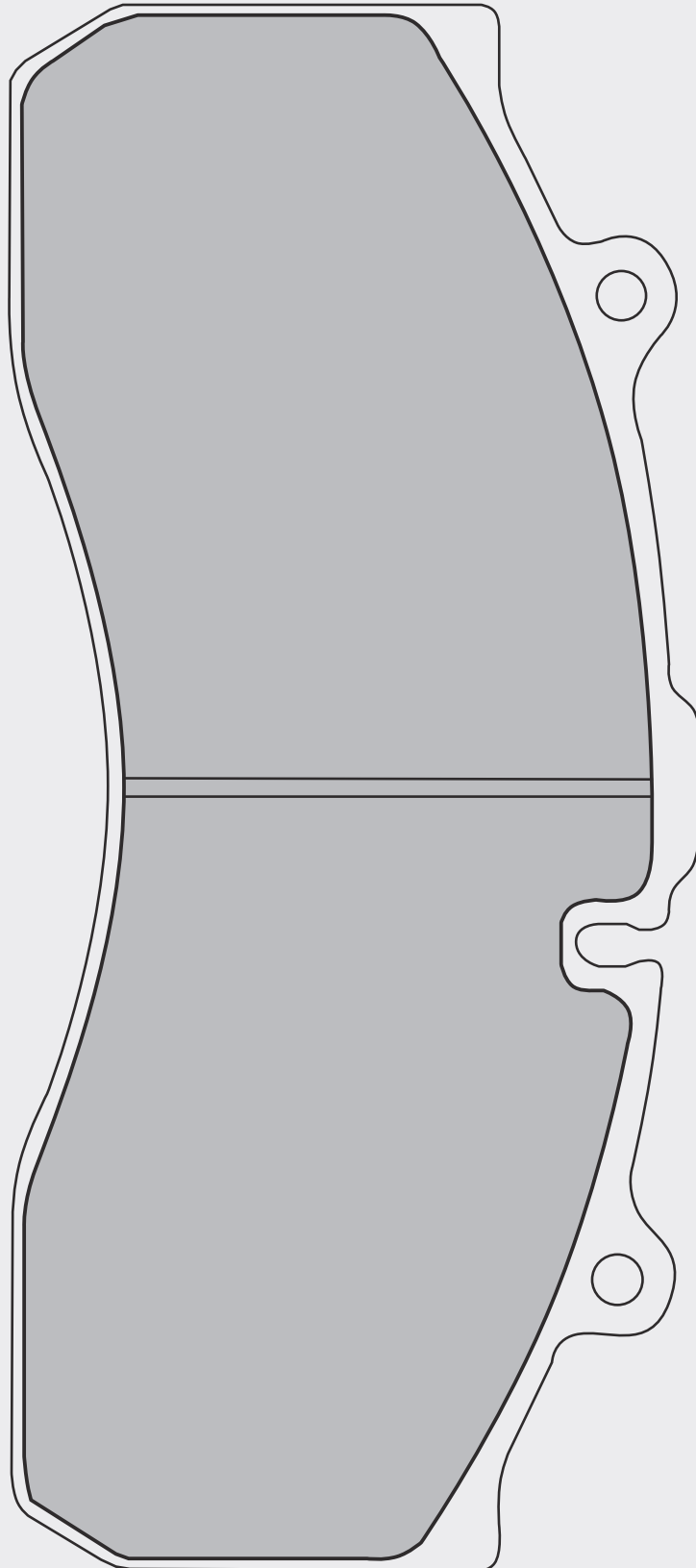
104.5mm

LENGTH

247.6mm

THICKNESS

30mm

PAD SHAPE



HALDEX DB22

SUPER HEAVY DUTY

TRP PAD NO.

AD1527SD

WVA

29185

MATERIAL

TRP1310SHD

CALIPER

HALDEX DB22

HEIGHT

104.5mm

LENGTH

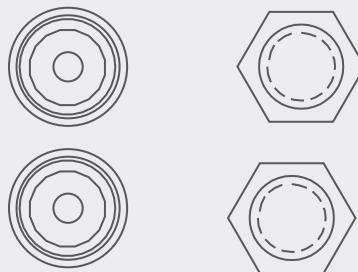
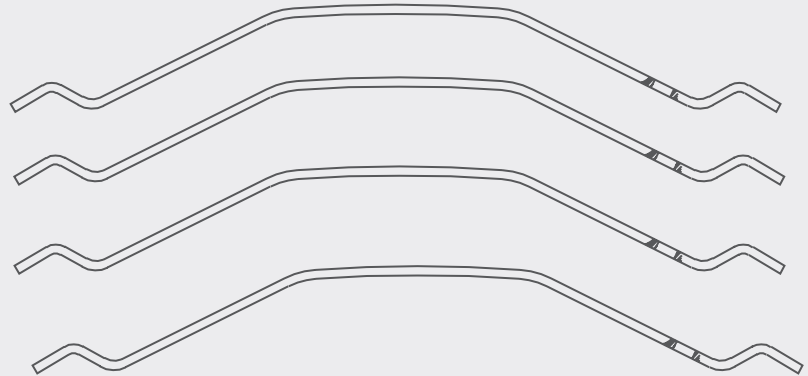
247.6mm

THICKNESS

30mm

ACCESSORY KIT

*NOT TO SCALE





KNORR SN6000

HEAVY DUTY

PAD SHAPE

TRP PAD NO.

1961734

WVA

29306

MATERIAL

TRP1210HD

CALIPER

KNORR SN6000

HEIGHT

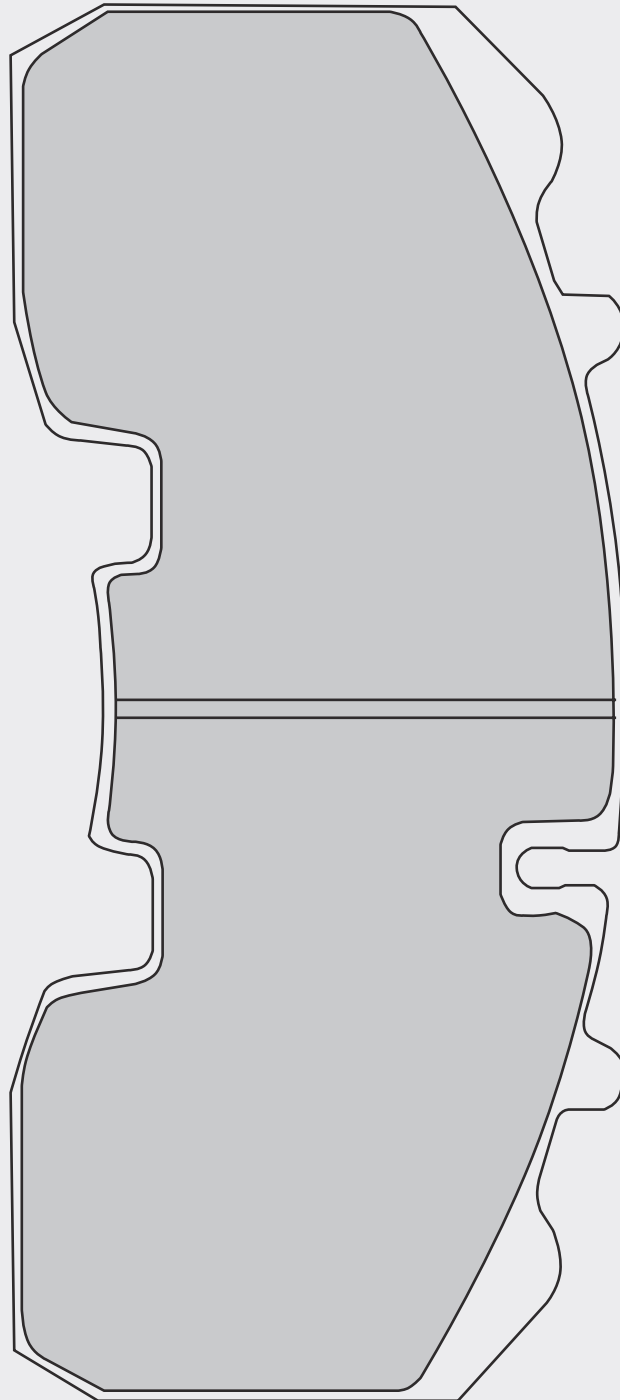
92.5mm

LENGTH

210.7mm

THICKNESS

30mm





KNORR SN6000

HEAVY DUTY

TRP PAD NO.

1961734

WVA

29306

MATERIAL

TRP1210HD

CALIPER

KNORR SN6000

HEIGHT

92.5mm

LENGTH

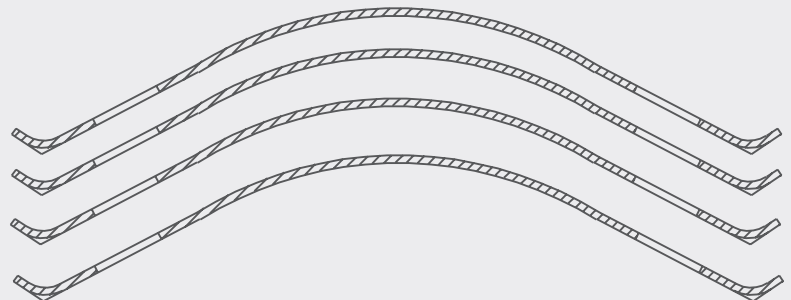
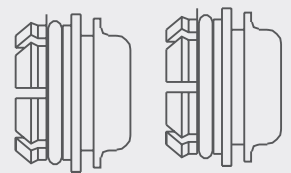
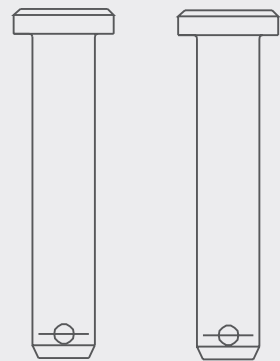
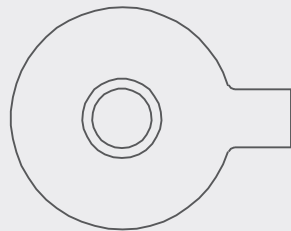
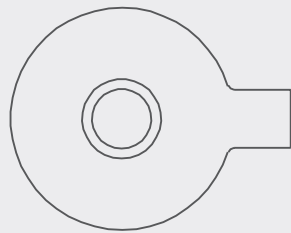
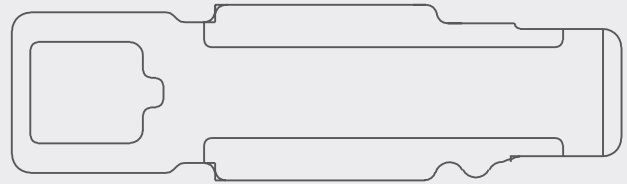
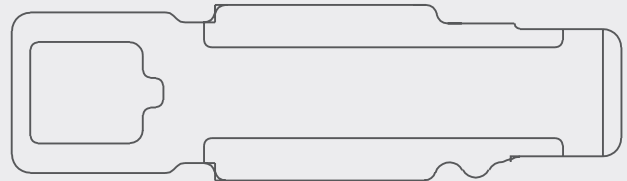
210.7mm

THICKNESS

30mm

ACCESSORY KIT

*NOT TO SCALE





KNORR SB6000

HEAVY DUTY

PAD SHAPE

TRP PAD NO.

0908142

WVA

29095

MATERIAL

TRP1210HD

CALIPER

KNORR SB6000

HEIGHT

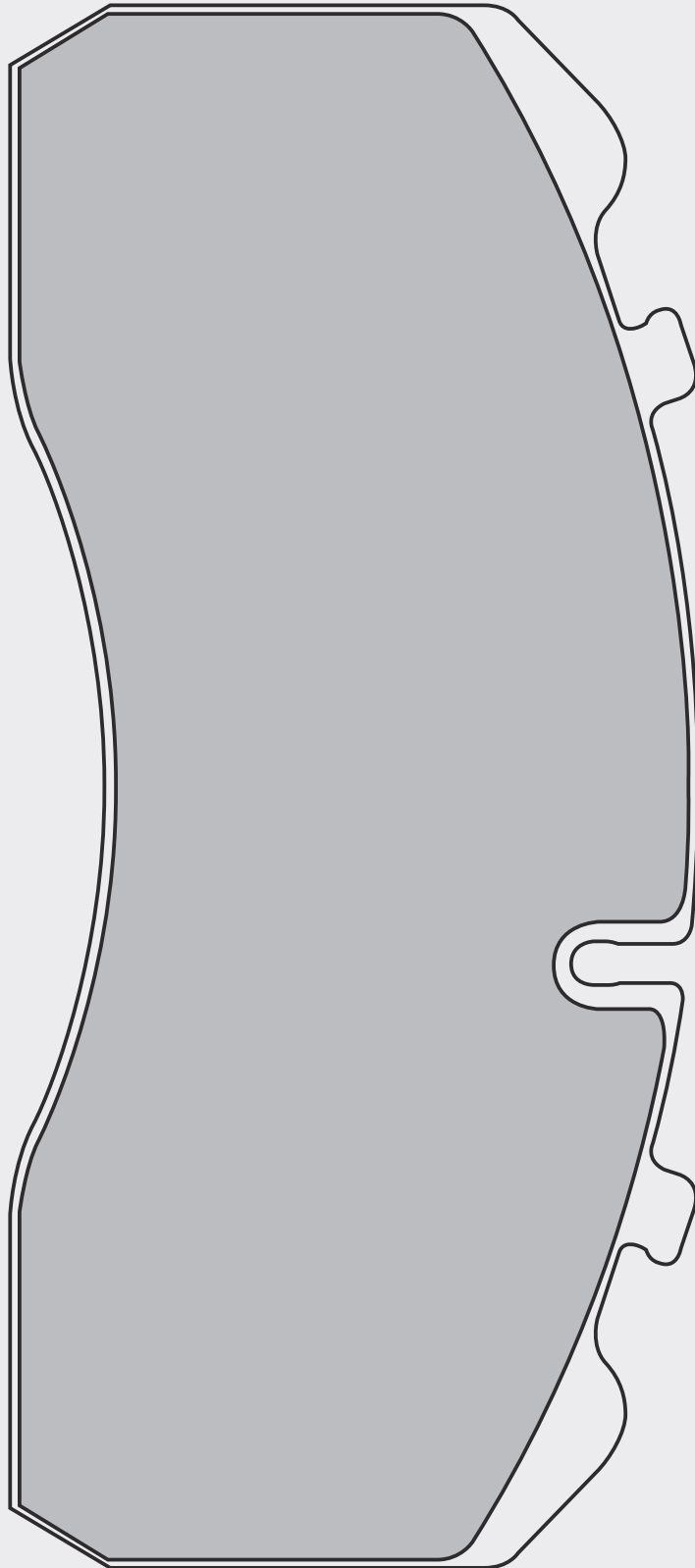
92.5mm

LENGTH

210.7mm

THICKNESS

30mm





KNORR SB6000

HEAVY DUTY

TRP PAD NO.

0908142

WVA

29095

MATERIAL

TRP1210HD

CALIPER

KNORR SB6000

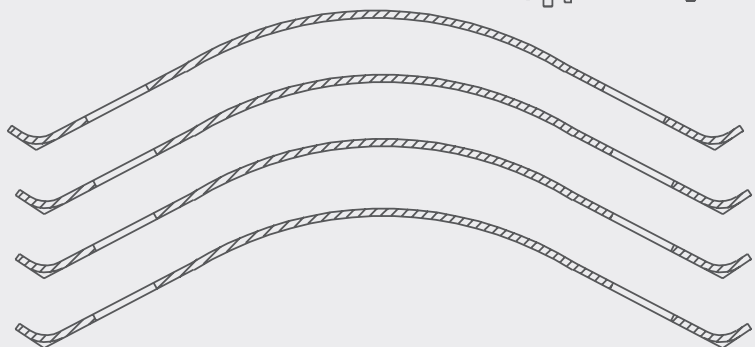
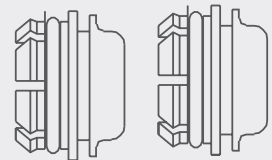
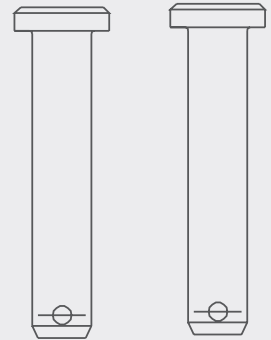
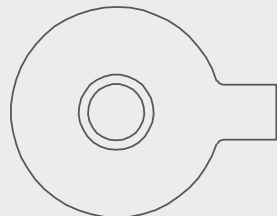
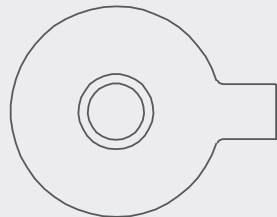
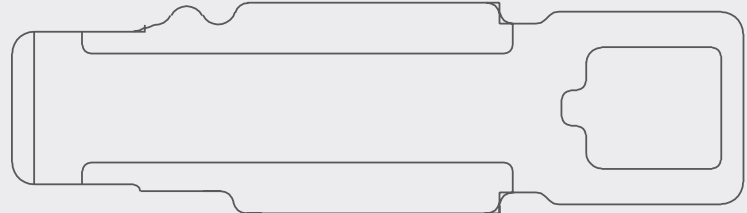
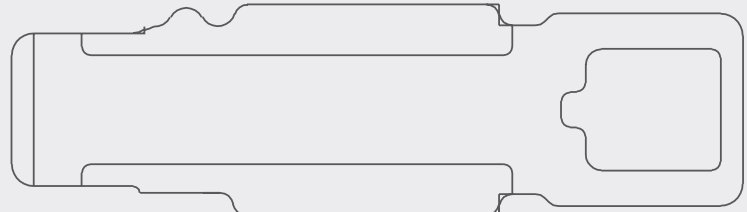
HEIGHT 92.5mm

LENGTH 210.7mm

THICKNESS 30mm

ACCESSORY KIT

*NOT TO SCALE





KNORR PROTEC SB7000

HEAVY DUTY

TRP PAD NO.

0908134

WVA

29253

MATERIAL

TRP1210HD

CALIPER

KNORR PROTEC SB7000

HEIGHT

108mm

LENGTH

247.5mm

THICKNESS

30mm

SUPER HEAVY DUTY

TRP PAD NO.

1540192

WVA

29253

MATERIAL

TRP1310SHD

CALIPER

KNORR PROTEC SB7000

HEIGHT

108mm

LENGTH

247.5mm

THICKNESS

30mm

PAD SHAPE



KNORR PROTEC SB7000

HEAVY DUTY

TRP PAD NO.

0908134

WVA

29253

MATERIAL

TRP1210HD

CALIPER

KNORR PROTEC SB7000

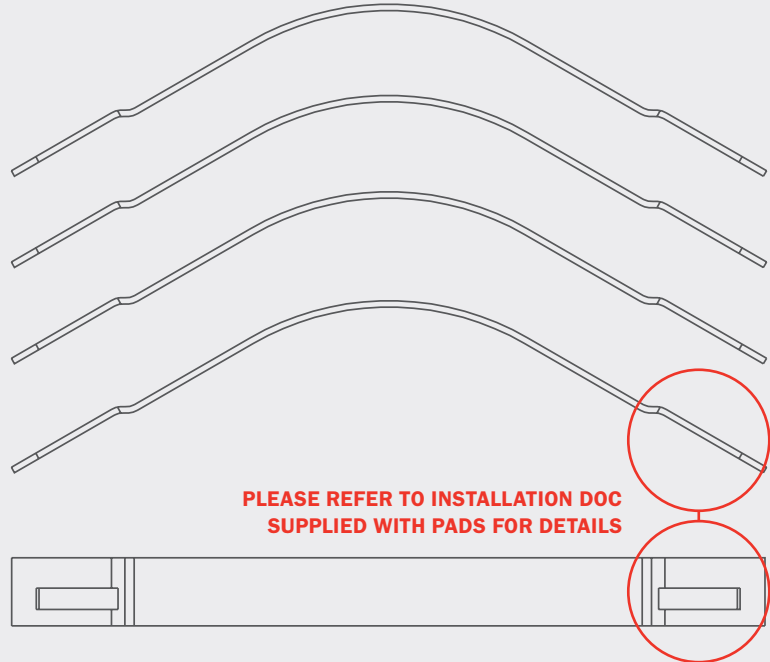
HEIGHT 108mm

LENGTH 247.5mm

THICKNESS 30mm

ACCESSORY KIT

*NOT TO SCALE



PLEASE REFER TO INSTALLATION DOC SUPPLIED WITH PADS FOR DETAILS

SUPER HEAVY DUTY

TRP PAD NO.

1540192

WVA

29253

MATERIAL

TRP1310SHD

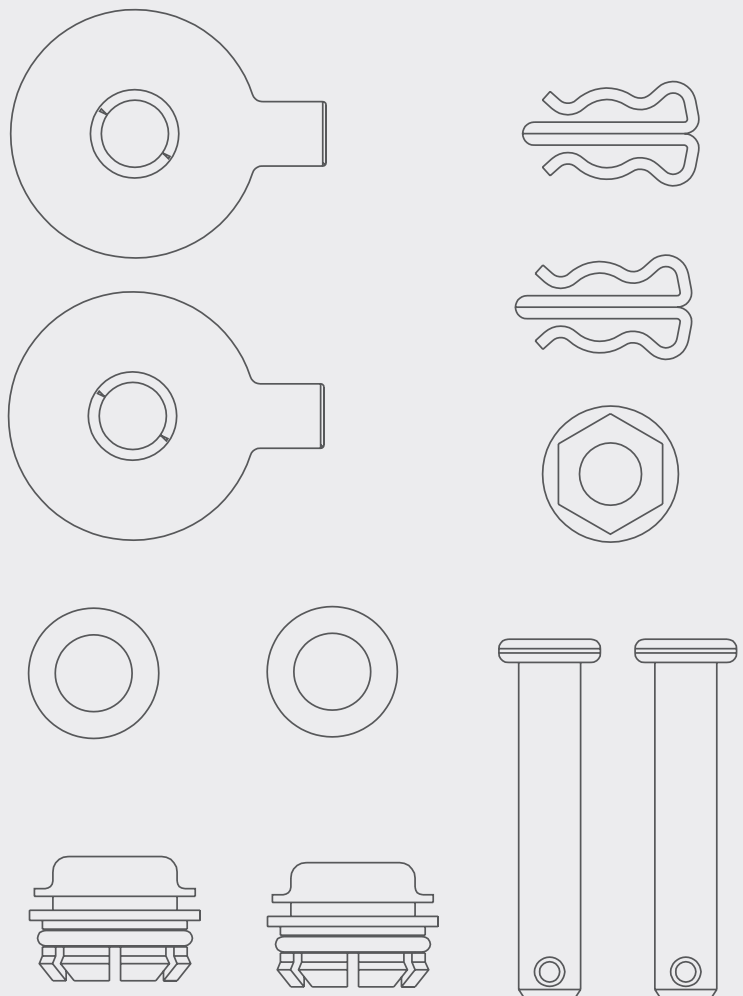
CALIPER

KNORR PROTEC SB7000

HEIGHT 108mm

LENGTH 247.5mm

THICKNESS 30mm





KNORR SK7000

HEAVY DUTY

PAD SHAPE

TRP PAD NO.

1961736

WVA

29308

MATERIAL

TRP1210HD

CALIPER

KNORR SK7000

HEIGHT

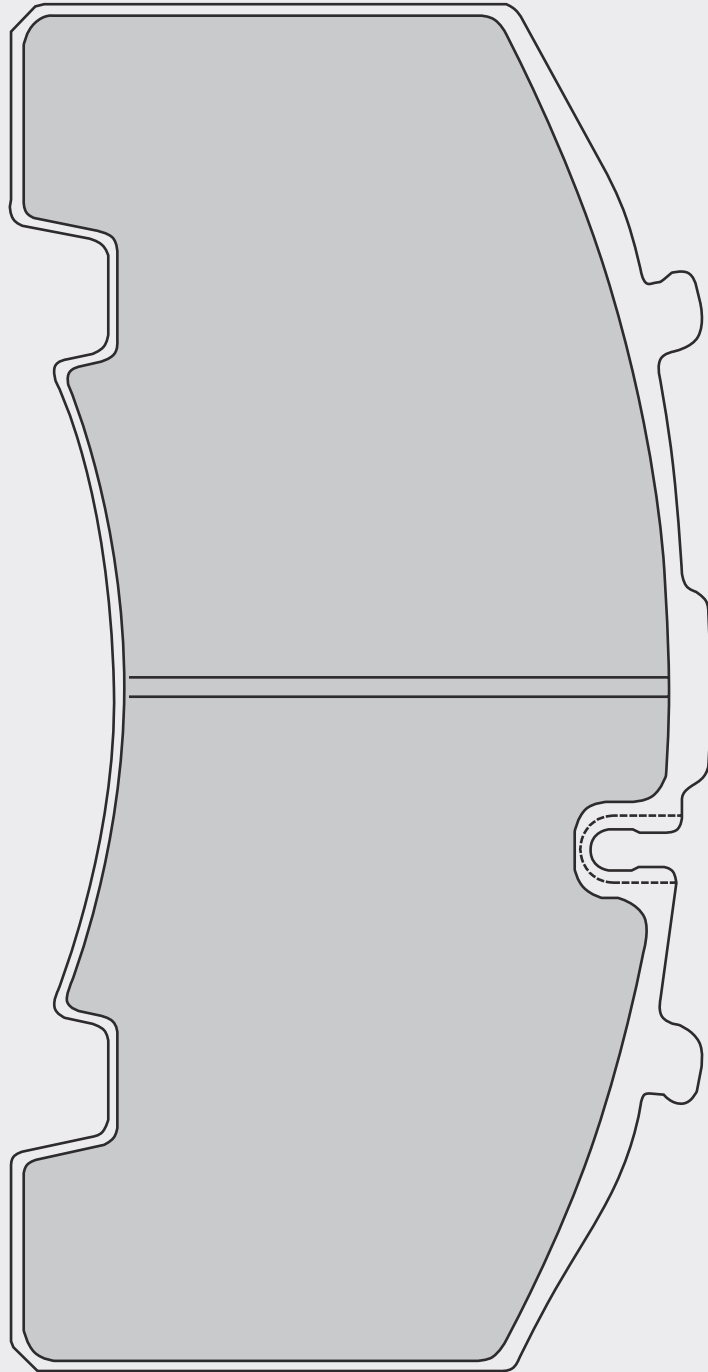
108.5mm

LENGTH

210.7mm

THICKNESS

30mm





KNORR SK7000

HEAVY DUTY

TRP PAD NO.

1961736

WVA

29308

MATERIAL

TRP1210HD

CALIPER

KNORR SK7000

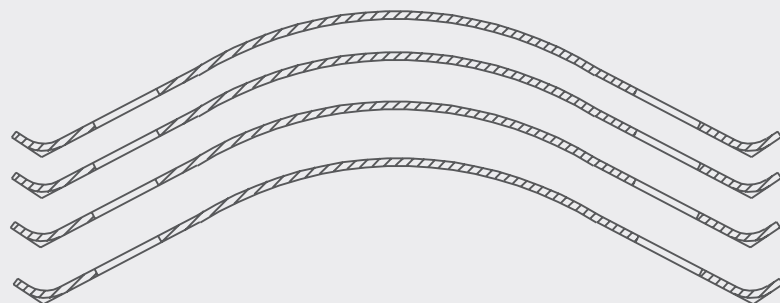
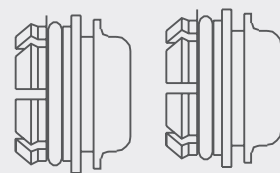
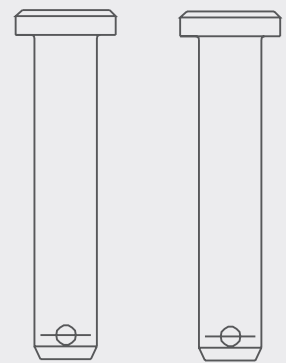
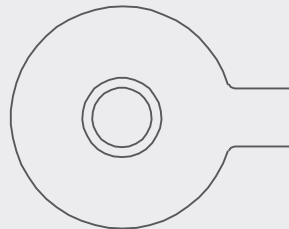
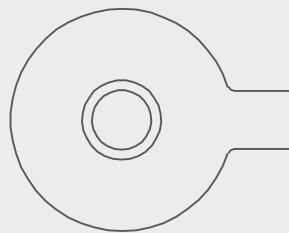
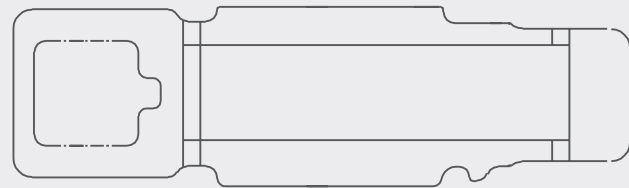
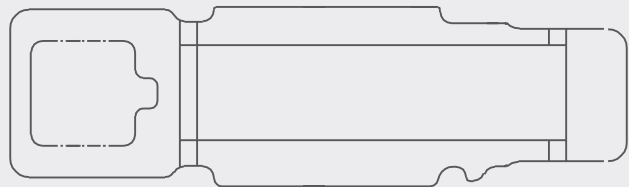
HEIGHT 108.5mm

LENGTH 210.7mm

THICKNESS 30mm

ACCESSORY KIT

*NOT TO SCALE





KNORR SK7000

HEAVY DUTY

TRP PAD NO.

1962431

WVA

29158

MATERIAL

TRP1210HD

CALIPER

KNORR SK7000

HEIGHT 108.5mm

LENGTH 210.7mm

THICKNESS 30mm

SUPER HEAVY DUTY

TRP PAD NO.

1536934

WVA

29158

MATERIAL

TRP1310SHD

CALIPER

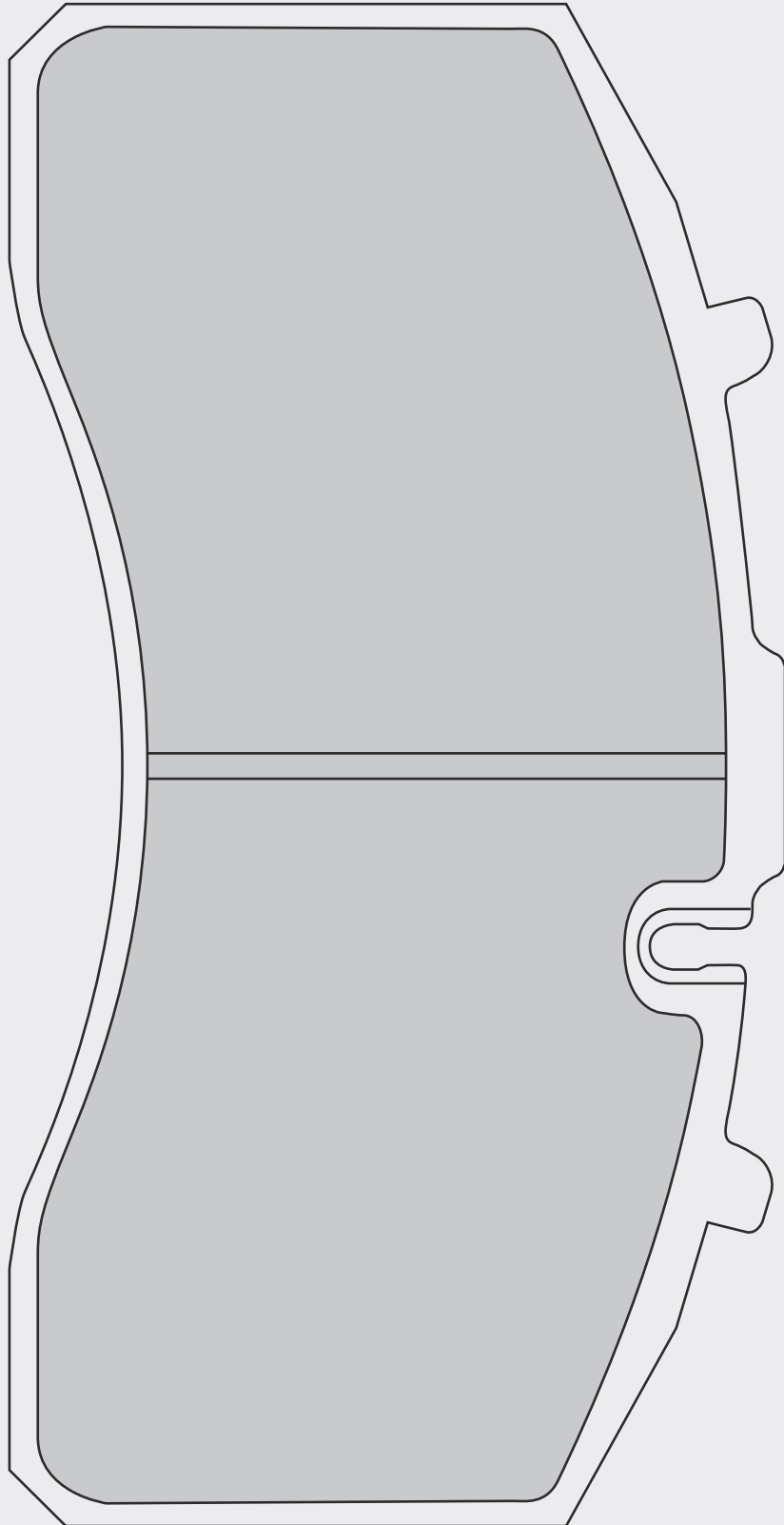
KNORR SK7000

HEIGHT 108.5mm

LENGTH 210.7mm

THICKNESS 30mm

PAD SHAPE





KNORR SK7000

HEAVY DUTY

TRP PAD NO.

1962431

WVA

29158

MATERIAL

TRP1210HD

CALIPER

KNORR SK7000

HEIGHT 108.5mm

LENGTH 210.7mm

THICKNESS 30mm

SUPER HEAVY DUTY

TRP PAD NO.

1536934

WVA

29158

MATERIAL

TRP1310SHD

CALIPER

KNORR SK7000

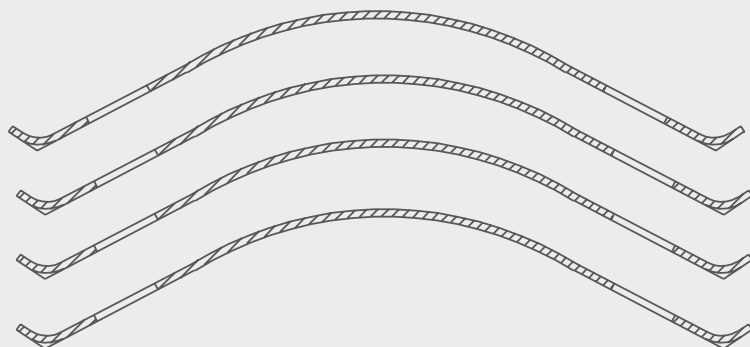
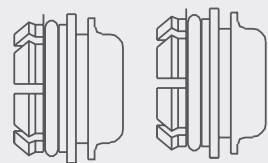
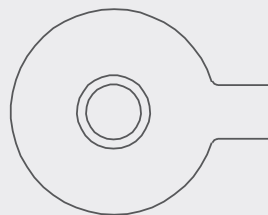
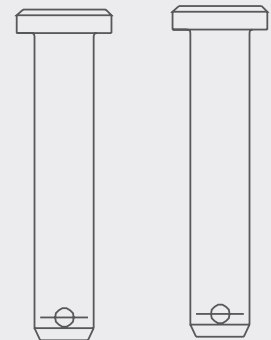
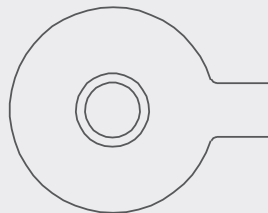
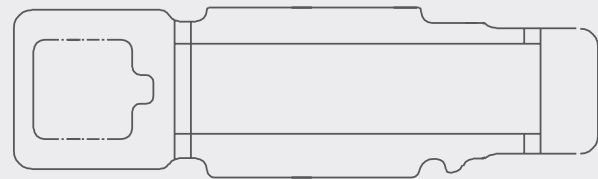
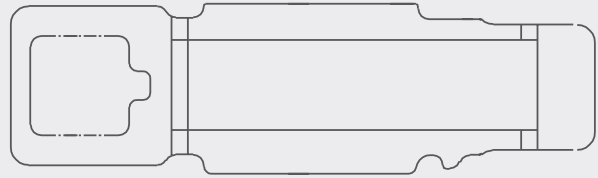
HEIGHT 108.5mm

LENGTH 210.7mm

THICKNESS 30mm

ACCESSORY KIT

*NOT TO SCALE





MERITOR DX195

HEAVY DUTY

TRP PAD NO.

0908137

WVA

29124

MATERIAL

TRP1210HD

CALIPER

MERITOR DX195

HEIGHT

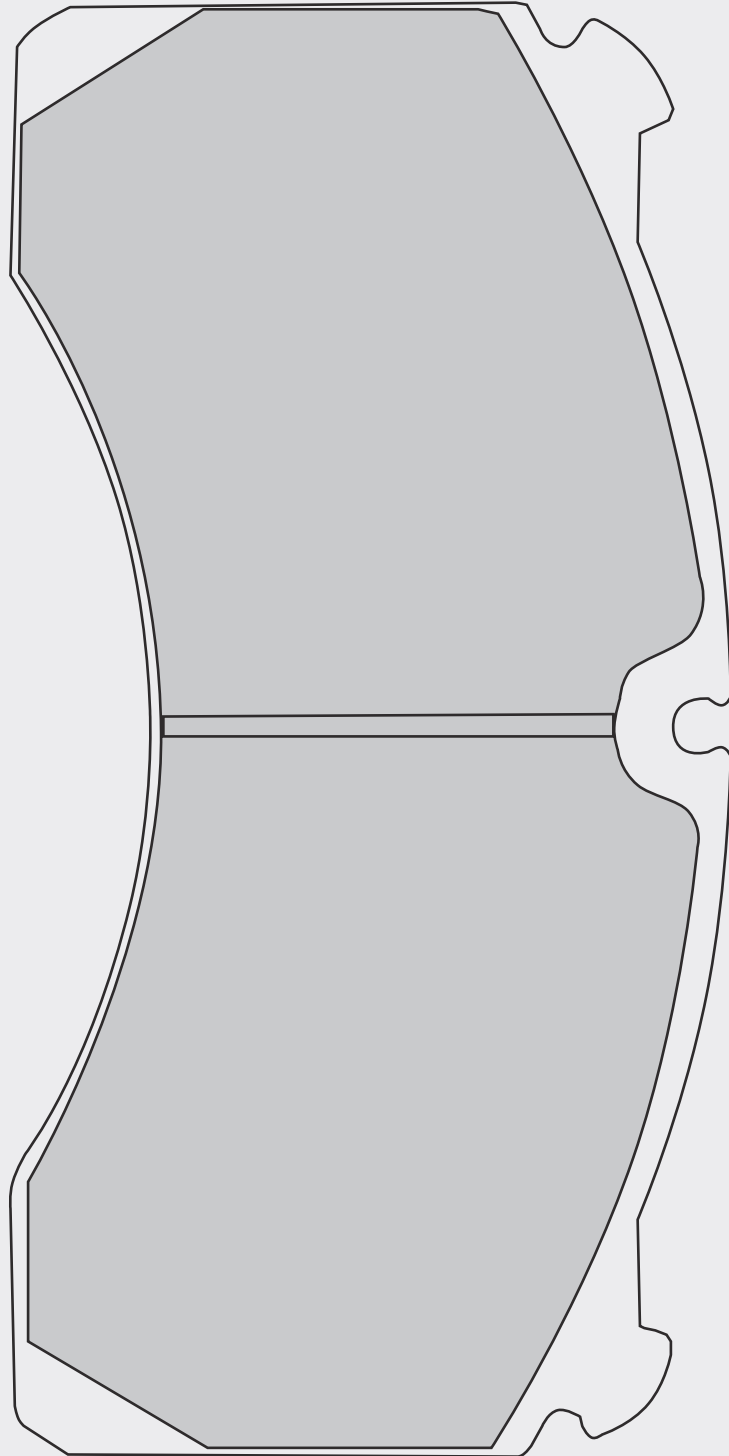
101.41mm

LENGTH

205.4mm

THICKNESS

27mm

PAD SHAPE



MERITOR DX195

HEAVY DUTY

TRP PAD NO.

0908137

WVA

29124

MATERIAL

TRP1210HD

CALIPER

MERITOR DX195

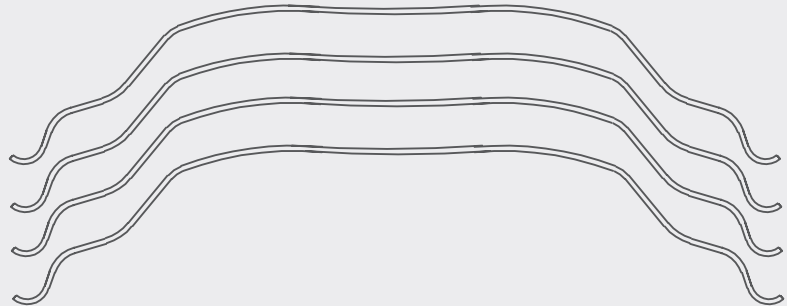
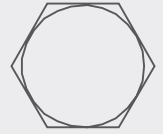
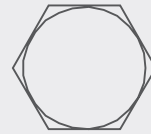
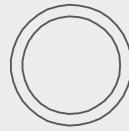
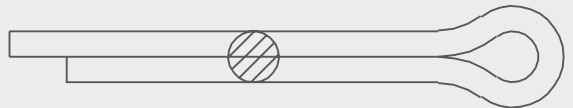
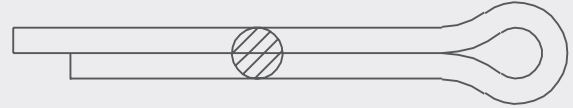
HEIGHT 101.41mm

LENGTH 205.4mm

THICKNESS 27mm

ACCESSORY KIT

*NOT TO SCALE





MERITOR DX225

SUPER HEAVY DUTY

TRP PAD NO.

1536932

WVA

29180

MATERIAL

TRP1310SHD

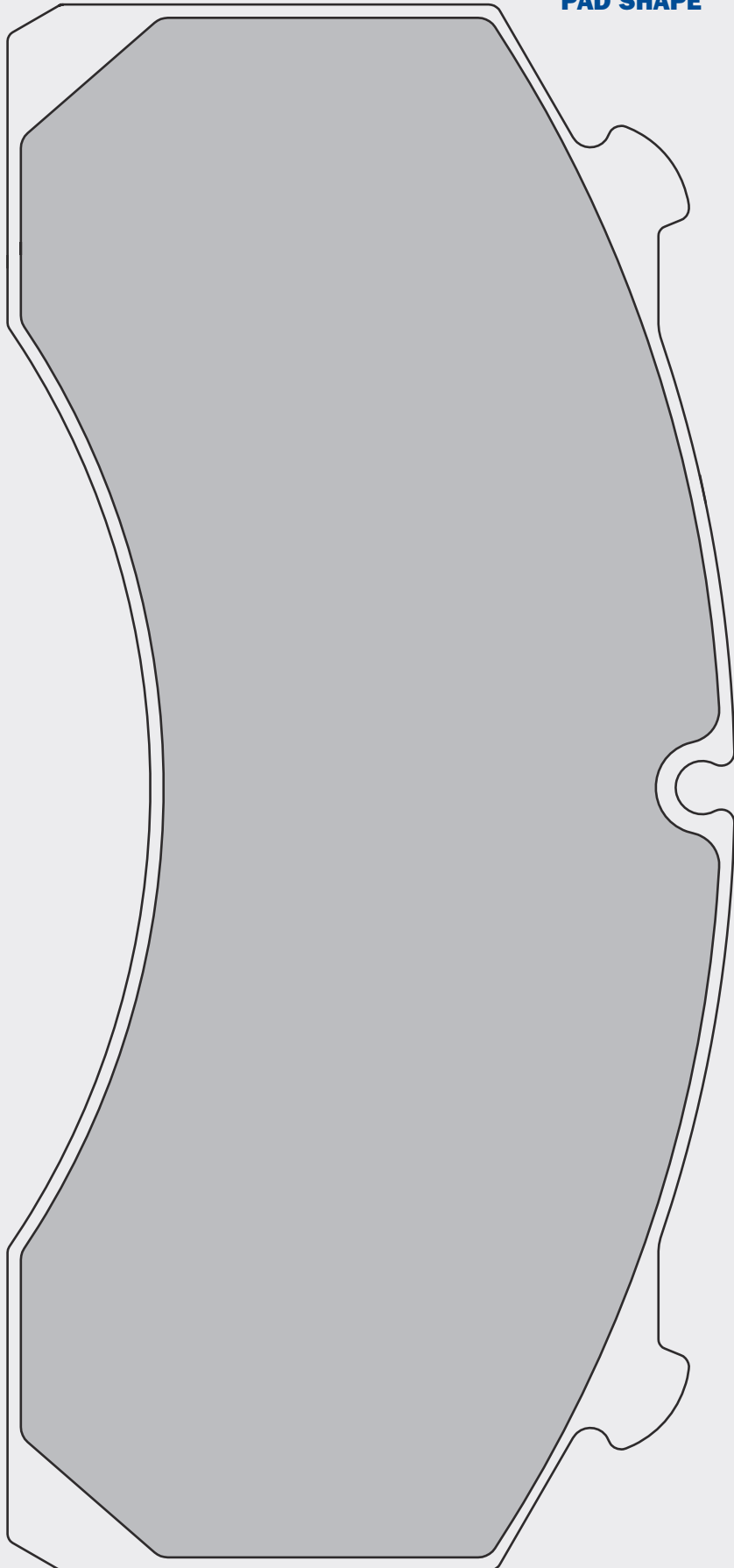
CALIPER

MERITOR DX225

HEIGHT	109.5mm
---------------	---------

LENGTH	235.6mm
---------------	---------

THICKNESS	29mm
------------------	------

PAD SHAPE



MERITOR DX225

SUPER HEAVY DUTY

TRP PAD NO.

1536932

WVA

29180

MATERIAL

TRP1310SHD

CALIPER

MERITOR DX225

HEIGHT

109.5mm

LENGTH

235.6mm

THICKNESS

29mm

ACCESSORY KIT

***NOT TO SCALE**





MERITOR ELSA 225-3

SUPER HEAVY DUTY

TRP PAD NO.

1962267

WVA

29174

MATERIAL

TRP1310SHD

CALIPER

MERITOR ELSA 225-3

HEIGHT

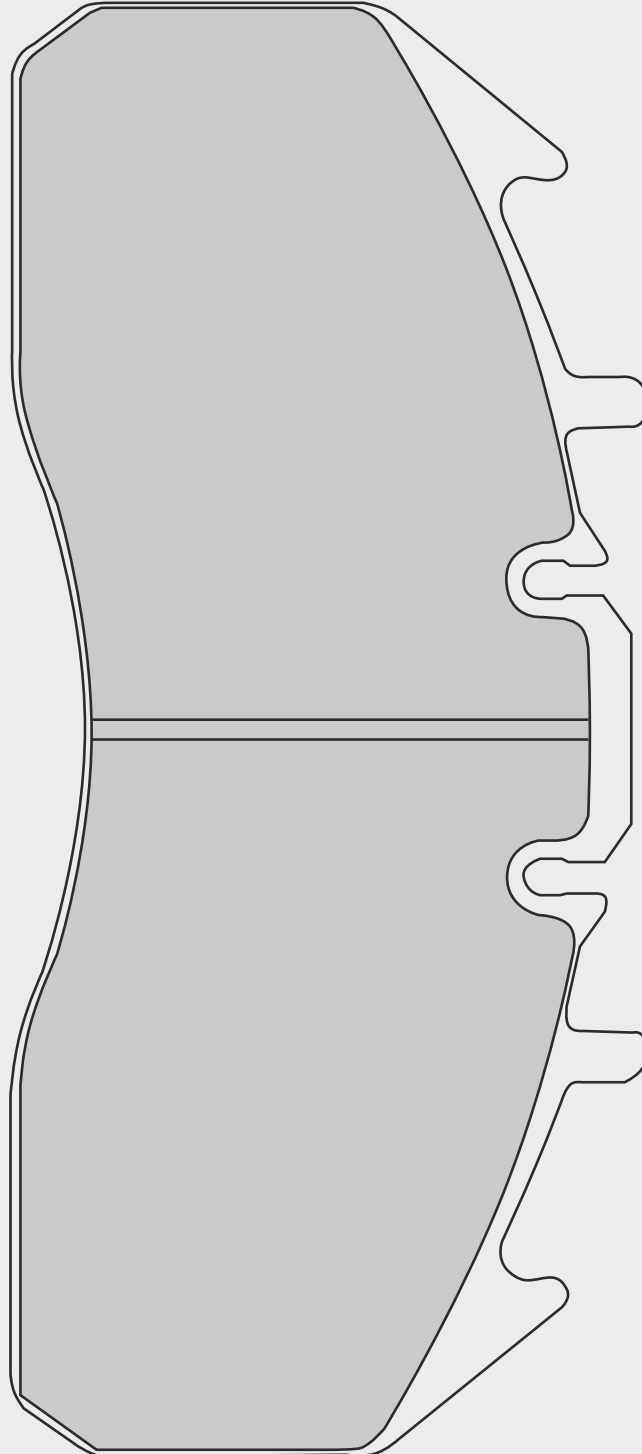
107.2mm

LENGTH

249.5mm

THICKNESS

29.2mm

PAD SHAPE



MERITOR ELSA 225-3

SUPER HEAVY DUTY

TRP PAD NO.

1962267

WVA

29174

MATERIAL

TRP1310SHD

CALIPER

MERITOR ELSA 225-3

HEIGHT

107.2mm

LENGTH

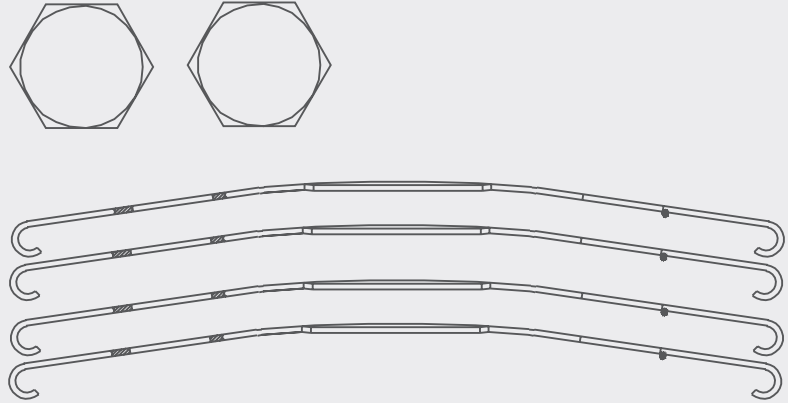
249.5mm

THICKNESS

29.2mm

ACCESSORY KIT

***NOT TO SCALE**





MERITOR EX225 H2

SUPER HEAVY DUTY

TRP PAD NO.

1536935

WVA

29187

MATERIAL

TRP1310SHD

CALIPER

MERITOR EX225 H2

HEIGHT

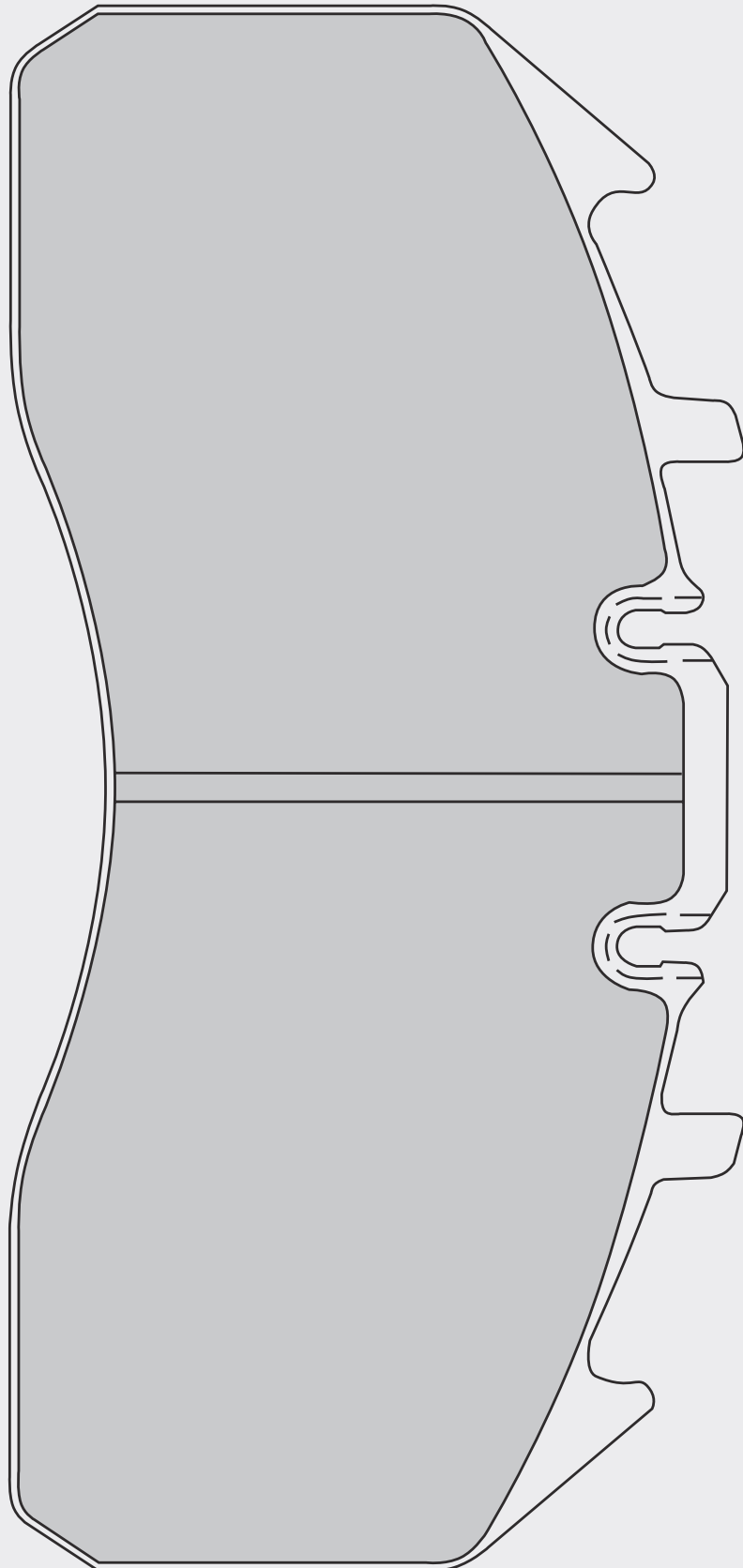
116.2mm

LENGTH

249.4mm

THICKNESS

28.8mm

PAD SHAPE



MERITOR EX225 H2

SUPER HEAVY DUTY

TRP PAD NO.

1536935

WVA

29187

MATERIAL

TRP1310SHD

CALIPER

MERITOR EX225 H2

HEIGHT

116.2mm

LENGTH

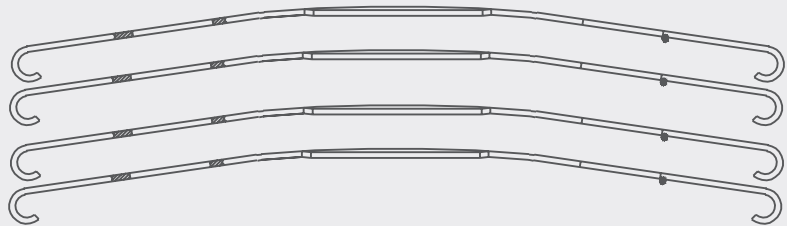
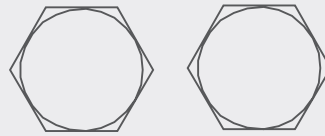
249.4mm

THICKNESS

28.8mm

ACCESSORY KIT

***NOT TO SCALE**





WABCO PAN 19

HEAVY DUTY

PAD SHAPE

TRP PAD NO.

0908138

WVA

29159

MATERIAL

TRP1210HD

CALIPER

WABCO PAN 19

HEIGHT

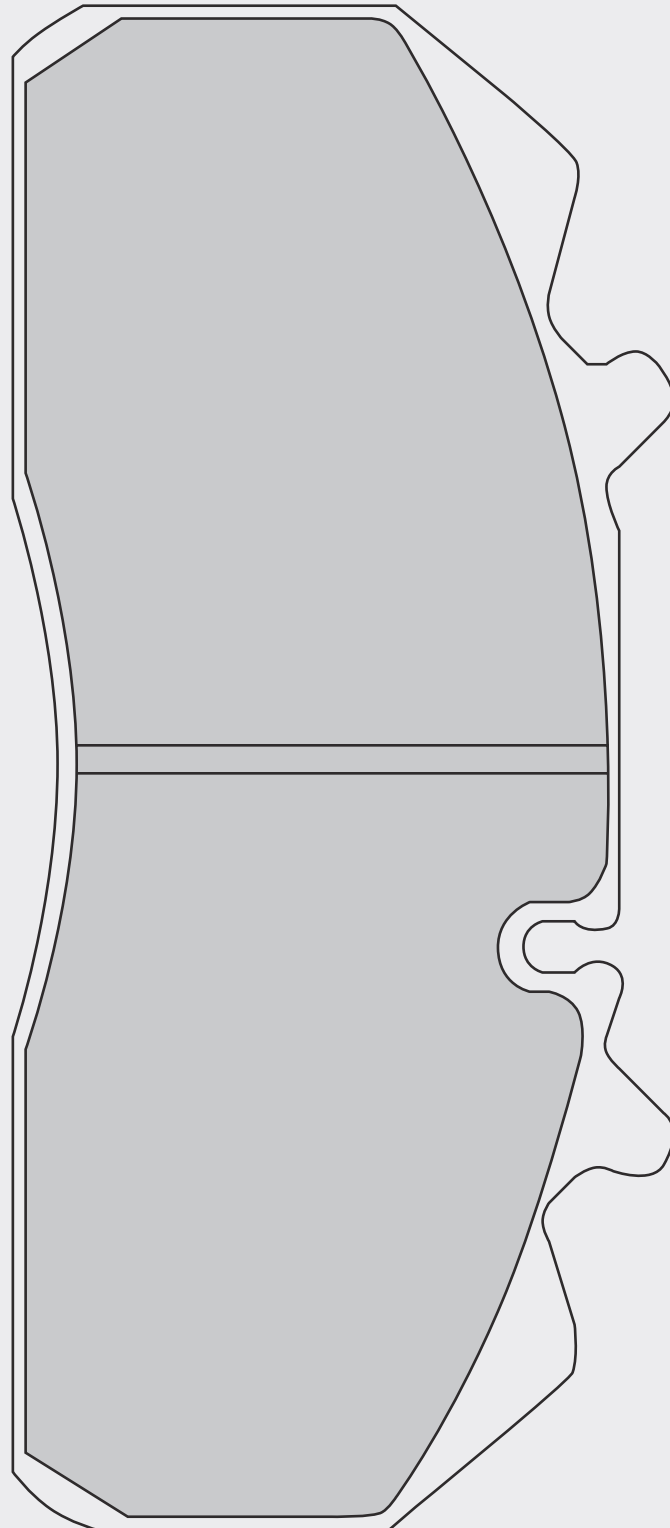
92.4mm

LENGTH

210.4mm

THICKNESS

29.7mm





WABCO PAN 19

HEAVY DUTY

TRP PAD NO.

0908138

WVA

29159

MATERIAL

TRP1210HD

CALIPER

WABCO PAN 19

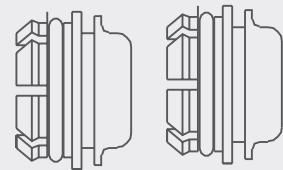
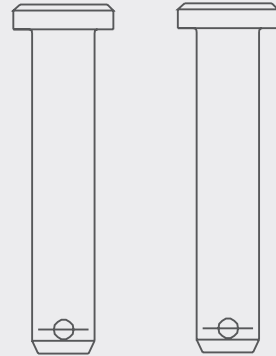
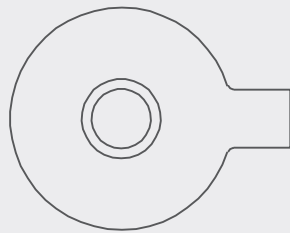
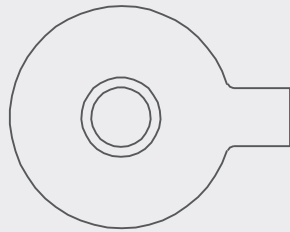
HEIGHT 92.4mm

LENGTH 210.4mm

THICKNESS 29.7mm

ACCESSORY KIT

*NOT TO SCALE





WABCO PAN 22

HEAVY DUTY

TRP PAD NO.

1962432

WVA

29162

MATERIAL

TRP1210HD

CALIPER

WABCO PAN 22

HEIGHT

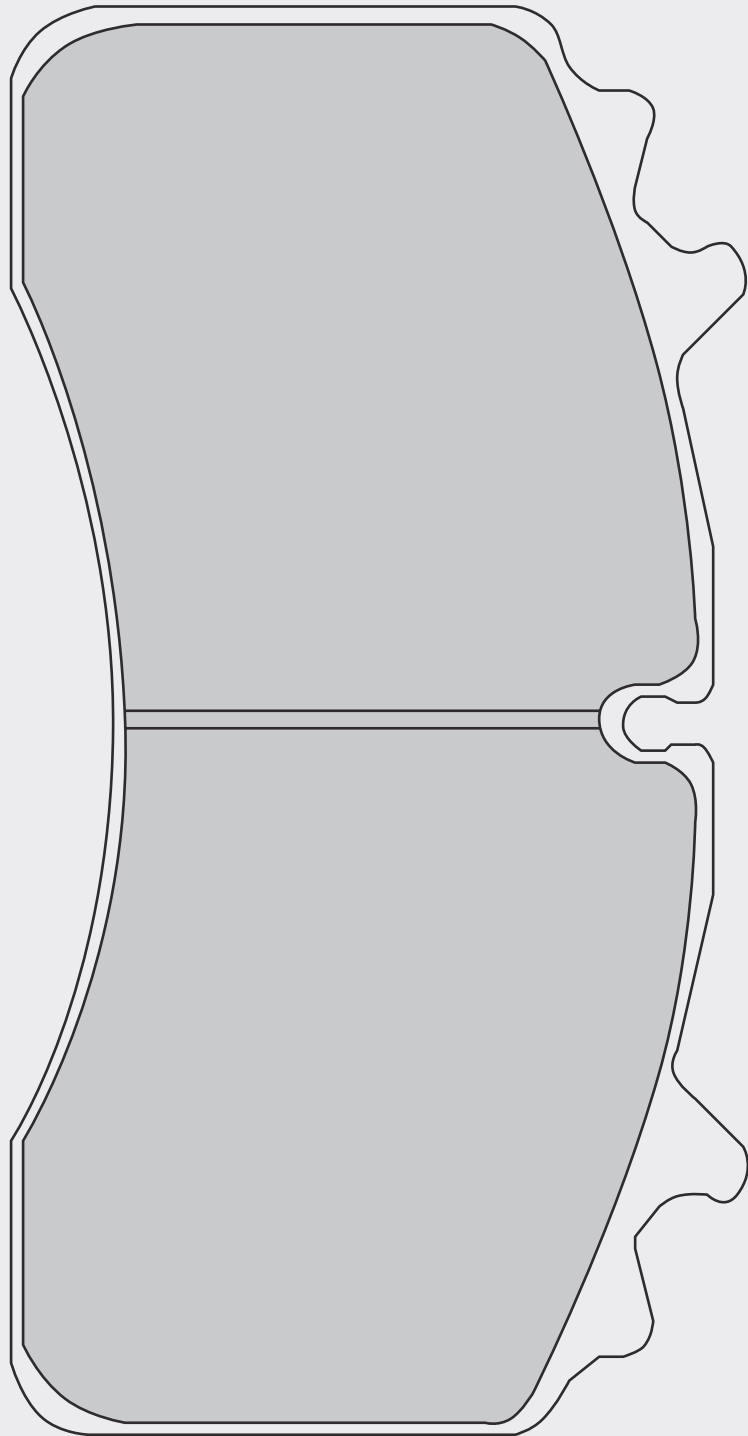
109.3mm

LENGTH

210.2mm

THICKNESS

31mm

PAD SHAPE



WABCO PAN 22

HEAVY DUTY

TRP PAD NO.

1962432

WVA

29162

MATERIAL

TRP1210HD

CALIPER

WABCO PAN 22

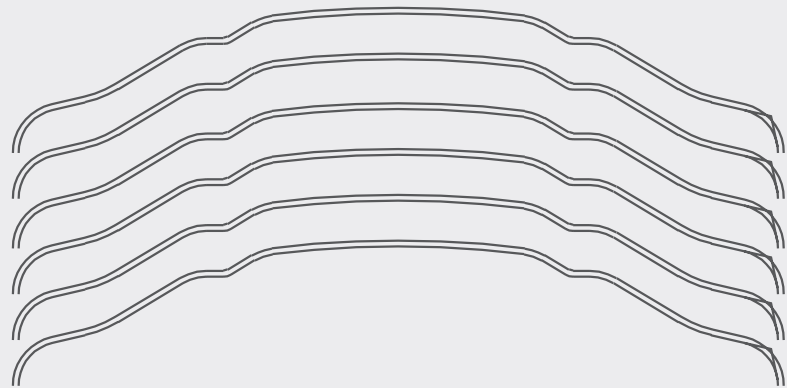
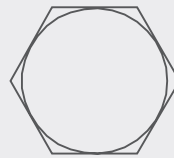
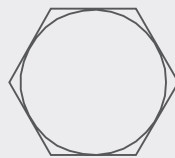
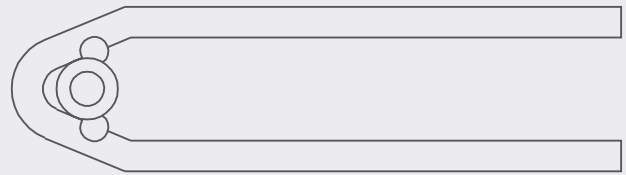
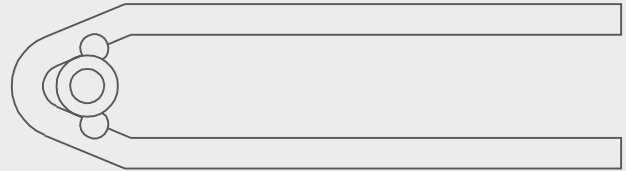
HEIGHT 109.3mm

LENGTH 210.2mm

THICKNESS 31mm

ACCESSORY KIT

*NOT TO SCALE



**FREECALL* 1800 (TRPART) 877 278 NOW
TO SPEAK TO YOUR LOCAL DEALER**



For further information and full warranty details visit our website
www.trpparts.com.au

Copyright ©2020 property of PACCAR Australia. Unauthorised reproduction in whole or part without our express written permission is strictly prohibited. Information and diagrams are provided for guidance only. PACCAR Australia reserves the right to alter product offerings and specifications at any time, without notice. PACCAR Australia makes every effort to ensure accuracy of all information but is not liable or responsible for any editorial, photographic or typographic errors. Product designs vary across different vehicle makes and models, and installed components should be identified by part number before attempting repair or replacement. Products should only be replaced by a suitably trained and qualified technician/tradesperson.

* Calls from Australian landlines are generally free of charge whilst calls from mobile phones are typically charged based on the rate determined by the caller's mobile service provider. Please check with your mobile service provider for call rates.